

Recombinant Human Laminins and Antibodies

Recombinant Human Laminin-3A32 (rLm3A32:rLm5A)

Recombinant Human Laminin-3B32 (rLm3B32:rLm5B)

Recombinant Human Laminin-3B11 (rLm3B11:rLm6B)

Anti-Human Laminin α 3 Monoclonal Antibody

Anti-Human Laminin β 3 Monoclonal Antibody

Laminins are extracellular matrix (ECM) proteins localized in the basement membrane (BM) and composed of α , β and γ chains. At least 15 kinds of laminins have been identified so far.

Laminin-3A32 (Laminin-5A) has various unique biological activities and is mainly localized in epithelial BMs of skin and lung. Laminin-3B32 (Laminin-5B) has stronger biological activities than Laminin-3A32 (Laminin-5A). Laminin-3B11 (Laminin-6B) is widely localized in vascular BMs of normal tissues and applicable to the culture of vascular endothelial cell.

Cell adhesion activity of rLm3A32, rLm3B32 and rLm3B11

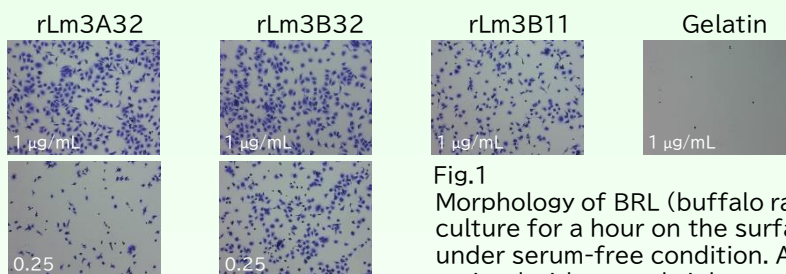


Fig.1

Morphology of BRL (buffalo rat liver) cell after the culture for a hour on the surface treated with rLms under serum-free condition. Adherent cells were stained with crystal violet.

Normal human umbilical vein endothelial cell (HUVEC) growth on rLm3B11

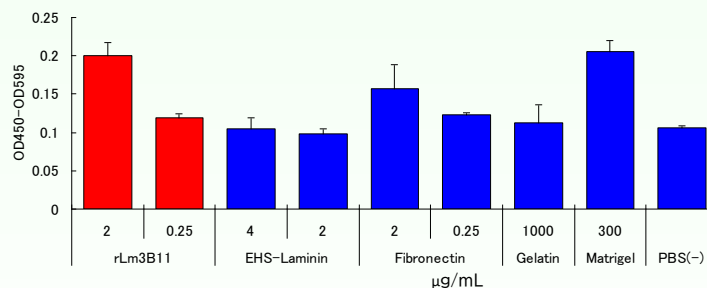
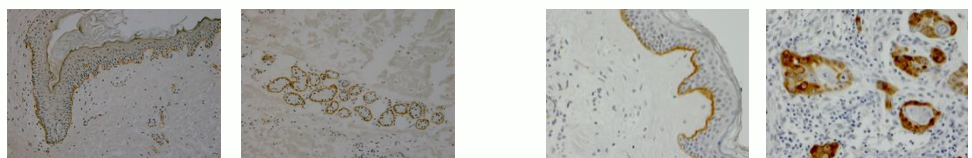


Fig.2

HUVECs were cultured on the surface treated with various kinds of ECM proteins and the cell growth were measured by WST-1 reagent.

Immunohistochemistry

Immunohistochemistry analysis of human tissues by laminin antibodies*.



Laminin α 3 antibody

Fig.3 BM of skin tissue BM of mammary gland

Laminin β 3 antibody

BM of skin tissue Skin cancer

* The data of immunohistochemistry is provided by prof. Miyazaki of Yokohama City University.

Specifications

Recombinant proteins

Host cell : HEK293
Origin : Human
Concentration : 20 µg/mL(approx.)

Antibodies

| Item | Application | Subclass | Cross reactivity | Concentration |
|---|-------------|----------------------------------|------------------|---------------|
| Anti-Human Laminin α 3 Monoclonal Antibody | WB IHC | Mouse IgG ₁ κ | Human | 0.8-1.2 µg/mL |
| Anti-Human Laminin β 3 Monoclonal Antibody | WB IHC | Mouse IgG ₁ λ | Human | |

| Item | Catalog number | Packing size |
|--|----------------|--------------|
| Recombinant human laminin-3A32 (rLm5A) | 47200000 | 2 µg |
| | 47201000 | 2 µg × 5 |
| Recombinant Human Laminin-3B32 (rLm5B) | 47032000 | 10 µg |
| Recombinant Human Laminin-3B11 (rLm6B) | 47033000 | 10 µg |
| Anti-Human Lm α 3 Monoclonal Antibody | 47252000 | 100 µg |
| Anti-Human Lm β 3 Monoclonal Antibody | 47253000 | 100 µg |

* For bulk inquiry, please contact us below.

* For research purposes only. Not for therapeutic or diagnostic use.

References

- J Biochem. 2002 Oct;132 (4):607-12.
- J Biol Chem. 2004 Jun 4;279 (23):24774-84.
- J Biochem. 2005 Nov;138 (5):539-52.
- Stem Cells. 2006 Nov;24 (11):2346-54.
- J Mol Histol. 2008 Aug;39 (4):435-46.

Please contact the one that best suits your need.

ORIENTAL YEAST CO., LTD.

Corporate Headquarters (Tokyo, Japan)

URL : <https://www.oyc.co.jp/bio/>
E-mail : fbi@nisshin.com
Phone : +81-3-3968-1192
Fax : +81-3-3968-4863

OYC EU B.V.

(Rotterdam, The Netherlands)

URL : <https://www.oyceu.com/>
E-mail : info@oyceu.com
Phone : +31-10-4145777
Fax : +31-10-2134919

OYC Americas, Inc.

(Vista, USA)

URL : <https://www.oycus.com/>
Phone : +1-760-659-5943
Fax : +1-760-201-8950

ORIENTAL YEAST INDIA Pvt. Ltd.

(Mumbai, INDIA)

URL : <https://oycindia.com/>
E-mail : info@oycindia.com
Phone : +91-22-27717107
Fax : +91-22-27717107

